



GLENDORE PUBLIC SCHOOL

Where Everyone can Succeed



RESPECT

CARING

LEARNING

SUCCESS

295 Maryland Drive, Maryland 2287
Email: glendore-p.school@det.nsw.edu.au

P: 02 4955 6644
F: 02 4955 6633

Web: www.glendore-p.school.det.nsw.edu.au
Facebook: www.facebook.com/GlendorePSofficial/

Term Two ~ 2020 Phase 1 ~ Update

Tuesday, 5 May 2020

Dear Glendore Parents and Caregivers,

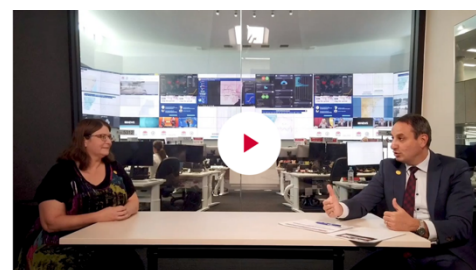
I last wrote to you on Sunday, 26th April to discuss organisation of Phase 0 operations at Glendore Public School. This followed advice from two days before. This Saturday, 2nd May, I provided via the School's social media platforms further advice regarding the NSW Department of Education's 'Managed Return to School' and in some detail, how this would be operationalised at Glendore Public School. Thank you for waiting for this direct email (pages 1-3). This more fully-explains our School's Phase 1 Education Program, one week in advance of Phase 1's commencement.

This information is expanded upon below and includes additional information that has been provided to the School over the past two days, including the commencement of additional cleaning support during the day and the arrival of extra resources that allow the School's staff to sanitise shared equipment such as desk spaces and curriculum guarantee electronic devices. I have also repeated information from our Phase 0 advisory (pages 4-5). This is so that you have all relevant information/links in one place.

Please also view an informative video and further advice for families regarding the NSW Department of Education's 'Managed Return to School' Plan. At this website, our Deputy Secretary of Education, Murat Dizdar and Dr Jan Fizzell, Medical Advisor with Health NSW discuss the return of students to schools:

<https://education.nsw.gov.au/covid-19/advice-for-families>

You may wish to click this picture to access a live link->



Dr. Jan Fizzell, Medical Adviser, NSW Health and Murat Dizdar, Deputy Secretary, School Operations and Performance discuss the health advice for schools.

Transcript of Health advice for schools video

The NSW Department of Education's '[Managed Return to School for Families](#)' is available here, <- or by clicking on the picture for a live pdf link.

Thank you in advance for your understanding and cooperation of the need for simultaneous education and health prioritisation of all students and staff at Glendore, especially in these unprecedented times.

Glendore Public School: Where Everyone Can Succeed

Mr Khalil Khay
School Principal

NSW Department of Education

	PHASE 0	PHASE 1	PHASE 2	PHASE 3	PHASE 4
At all times	Schools are open for students, teachers and staff.	Schools are open for students, teachers and staff.	Schools are open for students, teachers and staff.	Schools are open for students, teachers and staff.	Schools are open for students, teachers and staff.
Keep up-to-date	Keep up-to-date with your school's communications to make sure you receive important messages about timetable changes.	Keep up-to-date with your school's communications to make sure you receive important messages about timetable changes.	Keep up-to-date with your school's communications to make sure you receive important messages about timetable changes.	Keep up-to-date with your school's communications to make sure you receive important messages about timetable changes.	Keep up-to-date with your school's communications to make sure you receive important messages about timetable changes.
Any identified cases of COVID-19	Any identified cases of COVID-19 will continue to be managed in line with health advice, including temporary school closures where necessary.	Any identified cases of COVID-19 will continue to be managed in line with health advice, including temporary school closures where necessary.	Any identified cases of COVID-19 will continue to be managed in line with health advice, including temporary school closures where necessary.	Any identified cases of COVID-19 will continue to be managed in line with health advice, including temporary school closures where necessary.	Any identified cases of COVID-19 will continue to be managed in line with health advice, including temporary school closures where necessary.
Learning from home	Practical resources and guides to support students are available at the department's Learning from home hub .	Practical resources and guides to support students are available at the department's Learning from home hub .	Practical resources and guides to support students are available at the department's Learning from home hub .	Practical resources and guides to support students are available at the department's Learning from home hub .	Practical resources and guides to support students are available at the department's Learning from home hub .
You must continue to	<ul style="list-style-type: none"> Keep your children at home if possible. Support your child/children to continue learning at home. Communicate with your school via email and phone whenever possible. Follow the health advice and keep your child/children at home if they are unwell. 	<ul style="list-style-type: none"> Follow your school's advice regarding changes to drop off and pick up, including staying in your car when dropping off and picking up your child/children if safe to do so. Maintain social distancing by avoiding gathering outside of school gates. Make sure your child/children have access to lunch and snacks, noting some canteens may not be operating at this stage. Support your child/children to continue learning at home on remote learning days. Communicate with your school via email and phone whenever possible. Follow the health advice and keep your child/children at home if they are unwell. 	<ul style="list-style-type: none"> Follow your school's advice regarding changes to drop off and pick up, including staying in your car when dropping off and picking up your child/children if safe to do so. Maintain social distancing by avoiding gathering outside of school gates. Make sure your child/children have access to lunch and snacks, noting some canteens may not be operating at this stage. Support your child/children to continue learning at home on remote learning days. Communicate with your school via email and phone whenever possible. Follow the health advice and keep your child/children at home if they are unwell. 	<ul style="list-style-type: none"> Follow your school's advice regarding changes to drop off and pick up, including staying in your car when dropping off and picking up your child/children if safe to do so. Maintain social distancing by avoiding gathering outside of school gates. Make sure your child/children have access to lunch and snacks, noting some canteens may not be operating at this stage. Support your child/children to continue learning at home on remote learning days. Communicate with your school via email and phone whenever possible. Follow the health advice and keep your child/children at home if they are unwell. 	<ul style="list-style-type: none"> Follow your school's advice regarding changes to drop off and pick up, including staying in your car when dropping off and picking up your child/children if safe to do so. Maintain social distancing by avoiding gathering outside of school gates. Make sure your child/children have access to lunch and snacks, noting some canteens may not be operating at this stage. Support your child/children to continue learning at home on remote learning days. Communicate with your school via email and phone whenever possible. Follow the health advice and keep your child/children at home if they are unwell.
You can now	<ul style="list-style-type: none"> Send your child/children to school one day a week. You are encouraged to keep your child at home for the rest of the week wherever possible. Check with your school to see which day of the week your child/children should attend. Use the school canteen and uniform shop where appropriate hygiene measures are in place. 	<ul style="list-style-type: none"> Send your child/children to school one day a week. You are encouraged to keep your child at home for the rest of the week wherever possible. Check with your school to see which day of the week your child/children should attend. Use the school canteen and uniform shop where appropriate hygiene measures are in place. 	<ul style="list-style-type: none"> Send your child/children to school every day. Access community services run on school sites, where they are not restricted by Public Health Orders. Use the school canteen and uniform shop where appropriate hygiene measures are in place. Walk your child/children into and out of school while maintaining social distancing. 	<ul style="list-style-type: none"> Send your child/children to school every day. Participate in school excursions and inter-school activities. Use playground equipment at school. Drop your child/children off at school as you would normally do. Participate in school based activities such as volunteering in classes and assemblies. Use services that usually operate at your school like canteens and other community run activities. 	<ul style="list-style-type: none"> Send your child/children to school every day. Participate in school excursions and inter-school activities. Use playground equipment at school. Drop your child/children off at school as you would normally do. Participate in school based activities such as volunteering in classes and assemblies. Use services that usually operate at your school like canteens and other community run activities.

A managed return to school
Guidelines for families



Important Summary Points are immediately below:

For the first two weeks of Term 2, all NSW Public Schools (including Glendore Public School) are in Phase 0:

You must continue to:

- Keep your children at home if possible.
- Support your child/children to continue learning at home.
- Follow the health advice and keep your child /children at home if they are unwell.

Schools are open for families who need it:

- Families are encouraged to keep their children at home whenever possible.
- Students who attend school are supervised to complete CoL-WaH work.
- Students are not in their regular classes.
- All students will continue to engage with a single unit of work.

Please turn over for information regarding Phase 1, which commences from Monday, 11th May.

From Monday, 11th May (Week Three of Term 2) all NSW Public Schools (including Glendore Public School) are in Phase 1:

Schools have discretion for establishing which group attends on which day:

- From Mon (11/5/20) a 1 dpw (day per week) attendance roster by grade, that caters for siblings (Phase 1) starts.
- Students will be rostered with their class teacher in a double room on a 1dpw timetable by grade (Student Contact Day).
- Should siblings of students (e.g. Student X) on Student Contact Days need to attend around a family's need to engage in essential work, they may also attend on the day(s) that Student X is attending, e.g. Bob is in 6X and Bob's sister Jane is in KZ. On Bob's rostered Student Contact Day, his sister Jane can also attend.
- Families who need to send their child to school every day may continue to do so, with no child being turned away.
- Classes for Essential Services students and siblings of those on Student Contact Days will be organised each morning.
- These classes will be split into grade/stage-based groupings and will be supervised by Glendore Public School staff.
- These Glendore Public School staff will likely not be your child's regular, home-class teacher.
- These classes will be supported to engage with their Glendore Public School CoL-WaH work onsite.
- Social Distancing and Hygiene strategies are in place, with the School having capacity to respond to WHS requirements.
- No excursions or inter-school activities are permitted.
- Enhanced cleaning and hygiene supply arrangements continue, including morning, during-day and evening cleans.

You can now:

- Send your child/children to school one day per week (1 dpw).
- You are encouraged to keep your child at home for the rest of the week wherever possible.
- Our School Canteen and Uniform Shop remain closed for Weeks 2 and 3. However, the School will communicate with you regarding how soon these two services re-open. The School appreciates the need to resume their operation.

You must continue to:

- Follow the school's advice regarding Drop-Off and Pick-Up. This includes remaining in your car or restricted areas when dropping off and picking up your child/children and ensuring that it is safe to do so.
- Maintain social distancing by avoiding gathering outside of the School's gates.
- Make sure your child/children have access to lunch and snacks, noting some canteens may not be operating at this stage.
- Support your child/children to continue learning at home on 'Remote Learning Days'
- Communicate with your school via email and phone wherever possible
- Follow the health advice and keep your child/children at home if they are unwell.

The following advice is provided at these locations:

- The NSW Department of Education's '[Managed Return to School for Families](#)' is available at the link.
- [Glendore Public School's CoL-WaH \(Continuity of Learning-Work at Home\) Website](#) for GPS-provided work.
- The [NSW DoE's \(Department of Education\) COVID-19 – Advice for Families website](#).
- The [NSW DoE's 'Learning from Home' website](#) for further advice on remote learning
- The [NSW DoE's 'Wellbeing at Home', 'Telephone Interpreter Service' 'Parents and Caregivers Toolkit'](#)

A Summary of Rostered 'Student Contact Days' (from Monday, 11th May), and support for Essential Services students/families:

• Monday, 11th May (and weekly thereafter):	Kindergarten	
• Tuesday, 12th May (and weekly thereafter):	Year Two	
• Wednesday, 13th May (and weekly thereafter):	Years Five-Six	
• Thursday, 14th May (and weekly thereafter):	Years Three-Four	
• Friday, 15th May (and weekly thereafter):	Year One	and
• Essential Services Students/Siblings:	Daily as required/necessary	

Operationalising Phase 1 at Glendore Public School from Monday 11th May

- Our School, like all NSW Public Schools continues to excel in a situation of constant change. Each school and their staff has the will to best meet the needs of their students, staff and community as a whole.
- It has been an extraordinary three months of operation, switching through: 'Face-to-Face Teaching & Learning', 'Distance Education and Online Learning', 'Online Learning and Essentials Supervision' modes. In just over a week, the 'Phase 1-Staged Return to School of 1 dpw' will commence at Glendore Public School.
- Our Teachers, Admin and Support Staff Team will do their best work over Term Two in partnership with you. We will slowly scale back 'Face-to-Face Teaching & Learning' in line with the Premier's advice on movement through Phases 0-4.
- This includes planning for a safe, full-return as well as managing the required, dual workloads of simultaneously delivering quality 'Online' and 'Essential Services' and soon, 'Student Contact Day's', teaching, learning and wellbeing programs
- Now and during Phases 1-2, all Glendore students and staff onsite will have at least 5-6m² of internal space available to them and more in the outdoors.
- Our break times in the playground are controlled, so as to ensure students and staff wellbeing, personal safety and effective social distancing.
- From Monday, 11th May (Phase 1), the School will have all students rostered for their 'Student Contact Day' with their regular class group, in front of their regular classroom teacher, inside a double-brick room, with their dividing walls, fully open (180m²).

Operationalising Phase 1 at Glendore Public School from Monday 11th May (continued)

- Essential Services students and siblings, who must attend will be supervised by Glendore Staff, but not necessarily with their regular teacher/support staff. This will be in the Hall or the Library or spare double rooms. These students will continue to access their CoL-WaH programs with the caring support of our team.
- The Department of Education has allocated increased cleaning hours to schools. These are being focused in room being utilised by staff and students. Keyboards (curriculum Guarantee and desk spaces are disinfected between cohort changeovers.
- Please note that Phase 0 for Essential Services students continues for all of this week (Week 2). This provides our staff team with valuable time, necessary to plan for a safe and phased return. Phase 1 with 1dpw 'Student Contact Days' will commence from Monday, 11th May.
- When teaching, admin and support staff are not engaged in a 'Student Contact Day' from 11th May, they will be needed to continue a quality focus on planning, resourcing and delivering effective online teaching, learning and wellbeing programs. This includes supporting the siblings of those on a contact day that need to attend or Essential Services students with CoL-WaH work.
- Your support with achieving this is highly valued. Please note that as in Phase 0, during Phase 1, no student would ever be turned away from a NSW Public School.
- Glendore Public School always welcomes in-zone enrolments.
- Rostered 'Student Contact Days' (from Monday, 11th May), and continuing support for Essential Services students and families will be as follows:

• Monday, 11th May (and weekly thereafter):	Kindergarten
• Tuesday, 12th May (and weekly thereafter):	Year Two
• Wednesday, 13th May (and weekly thereafter):	Years Five-Six
• Thursday, 14th May (and weekly thereafter):	Years Three-Four
• Friday, 15th May (and weekly thereafter):	Year One
• Essential Services Students/Siblings:	Daily as required/necessary

- A daily VC will occur in each 'Student Contact Day' between the classes onsite and students at home from that class, who are unable to attend for any reason. These students will be supported through this VC contact with peers and teacher, as well as their weekly unit of CoL-WaH work.
- When the Premier advises a move from Phase 1 to Phase 2 (2 student contact days per week), we will advise you of the additional days. The Student Contact Days above will not change, but will be added to. Additional Student Contact Days may not necessarily be 2 days in a row due to rooming requirements, home class staffing and the prevailing WH&S advice at that time.
- Our April Newsletter continues to be updated with the latest advice and will be issued tomorrow.
- Please review the NSW Department of Education's '[Managed Return to School for Families](#)' plan at our CoL-WaH website. ----->

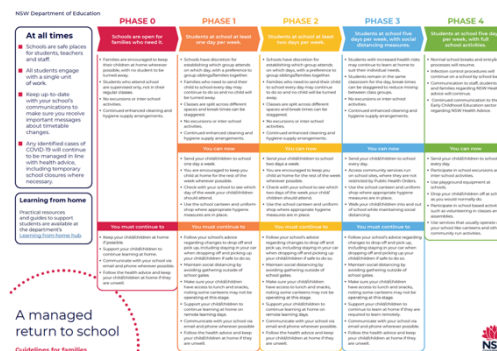


Dr. Jan Fizzell, Medical Adviser, NSW Health and Murat Dizdar, Deputy Secretary, School Operations and Performance discuss the health advice for schools.

Transcript of Health advice for schools video

- Please view the critical video and further advice for families. Here, our Deputy Secretary of Education, Murat Dizdar and Dr Jan Fizzell, Medical Advisor with Health NSW discuss the phased return of students to schools.

<-----



- Please find separately attached a COVID-19 Social Story that you may like to share with your child/children to help them understand Phase 1.

----->

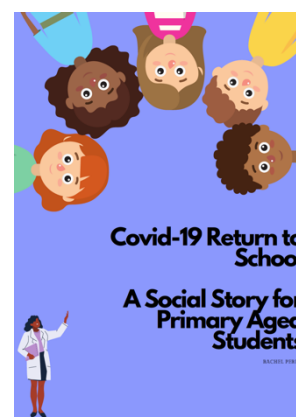
- Should you have any concerns or would like to discuss any extenuating circumstances that may affect your child/children returning to school, please contact the School Office and ask to speak with your child's teacher or assistant principal.
- For more complex concerns, you may also wish to reach out via our School Office to make time to speak with our Learning Support Team, including specialist teaching and support staff, our School Psychologist, our Deputy Principal or myself.

Please take care

Glendore Public School: Where Everyone Can Succeed

Mr Khalil Khay
School Principal

<https://education.nsw.gov.au/covid-19/advice-for-families>





GLENDORE PUBLIC SCHOOL

Where Everyone can Succeed

RESPECT

CARING

LEARNING

SUCCESS



295 Maryland Drive, Maryland 2287
Email: glendore-p.school@det.nsw.edu.au

P: 02 4955 6644
F: 02 4955 6633

Web: www.glendore-p.school.det.nsw.edu.au
Facebook: www.facebook.com/GlendorePSofficial/

Term Two ~ 2020 Phase 1 ~ Update

Tuesday, 5 May 2020

This is a two-page document, which includes summary points (Page One) and Background Information (Page Two) behind the massive planning and processes that have occurred in every NSW Public School over the past two weeks. (attachments provided)

Important Summary Points are:

- This Monday AND Tuesday are Pupil Free days
- From Wed (28/4/20) to Fri (8/5/20) all Public Schools operate in Phase 0 (Only Essential Services students attend - 5%)
- From Mon (11/5/20) a 1 dpw (day per week) attendance roster by grade, that caters for siblings (Phase 1-25%) starts.
- Essential Services students are able to attend daily.

For the first two weeks of Term 2, all NSW Public Schools (including Glendore Public School) are in Phase 0:

You must continue to:

- Keep your children at home if possible.
- Support your child/children to continue learning at home.
- Follow the health advice and keep your child /children at home if they are unwell.

Schools are open for families who need it:

- Families are encouraged to keep their children at home whenever possible.
- Students who attend school are supervised to complete CoL-WaH work.
- Students are not in their regular classes.
- All students will continue to engage with a single unit of work.

The following advice is provided at these locations:

- The NSW Department of Education's '[Managed Return to School for Families](#)' is available at the link
- [Glendore Public School's CoL-WaH \(Continuity of Learning-Work at Home\) Website](#) for GPS-provided work
- The [NSW DoE's \(Department of Education\) 'Learning from Home' website](#) for further advice on remote learning
- The [NSW DoE's 'Wellbeing at Home', 'Telephone Interpreter Service' 'Parents and Caregivers Toolkit'](#)

What does this mean for Glendore Public School in Term 2?

- There is much for our school to plan. I have been briefed by the DoE after the Premier's announcement of the new details, and I am reviewing the DoE's ongoing advice sent to advise and support principals to operationalise student learning for Term 2, 2020.
- Monday 27 April and Tuesday 28 April (Week 1) are declared School Development Days. Across these two days, all staff will participate in professional learning to plan for supporting students in the term ahead. No student supervision will be available.
- CoL-WaH Teaching and Learning programs now resume for students from home on Wednesday 29 April. All NSW Public School will continue with the model used at the end of Term 1 for the first and full two weeks of Term 2, 2020.
- During this time, while the school is still open, the State Government still encourages students to learn from home, as in Term 1. The learning material for "learning from home" for Weeks 1 and 2, will be distributed or available by Tuesday afternoon on 28 April 2020, ready for students to follow on Wednesday morning 29 April 2020.
- Over Week 1, we will be developing Glendore Public School's model for learning delivery from Week 3 (11th May, 2020).
- From this day, every student will have the opportunity to start attending school 1dpw, as per the DoE's guidelines.
- I will be in a position to inform our community by early in Week 2, about what Glendore PS' model from Week 3 will look like.
- From Week 3, Term 2, we will begin a managed return to school. The attached document outlines the Department's plan.
- At this stage, Weeks 1 and 2 of Term 2 will be Phase 0. Weeks 3-6 will be Phase 1.
- [This link also provides further DoE advice for families](#) at this time. education.nsw.gov.au/covid-19/advice-for-families
- I will provide further information and updates as soon as they come to hand via email, the Glendore Grapevine and Facebook.

Thank you in advance for your understanding and cooperation of the need for simultaneous education and health prioritisation of all students and staff at Glendore, especially in these unprecedented times.

Mr Khay,
School Principal

Background Information:

Earlier this week, NSW Premier Gladys Berejiklian and Minister for Education and Early Childhood Learning, Sarah Mitchell made some media announcements and principals met with Mark Scott, NSW DoE Secretary, this morning for further clarification. Health officials have advised the National Cabinet that schools are safe to remain open.

Ms Berejiklian said *"Health advice continues to be that schools remain open, and parents, teachers and students can be confident that school is a safe place."*

"We are grateful to all families who kept their children home from school at the end of Term 1 and to teachers who worked tirelessly to deliver education online," Ms Berejiklian said.

"This allowed us critical time to prepare our schools to develop better online learning options and for considering additional hygiene measures to allow schools to return. We know that nothing is more important than a child's education, and we must begin to return our students to their classrooms in a considered way."

"Under these changes, from Week 3 of Term 2, every student will be attending school for one day a week. We will look to increase the no. of days students are at school in a staged way and hope to have all children back at school full-time by Term 3."

Operationalising this at Glendore Public School:

- Email and Telephone are the preferred manner of contact with the school office. Details are on Page 1 of this letter.
- To support social distancing and limiting the number of people on the site, we will only be opening our main gate for pedestrian access. Staff only will only be using the Main Car Park. The top gate and top car park are closed until further notice.
- Parents and Caregivers are asked to not enter the School's Grounds past the front grassed area, as in Term 1. This area will be taped off with high visibility bunting – the same that was used during the School's 'Share Our Space' programs.
- Glendore PS Executive Staff will provide a morning supervision as in Term 1, with onsite teaching staff providing lunch, recess and afternoon duty supervision. The School's staff will support students to safely access their parents/caregivers in the afternoon.
- Glendore's OSHC Service is running its vacation care program on Monday. Booking enquiries for Tuesday should be made direct to the service via its website (www.ymcansw.org.au/centres/ymca-glendore-oshc/) or phone (0417 604 248, 1300 009 679).
- For the first two weeks of Term 2, our School Canteen remains closed. We will have the re-opening of our School Canteen as part of our considerations for Phase 1 of the return to school. Stand by for further advice and communications in this area.
- Parents and Caregivers will continue to be provided with Col-WaH work from the school until its complete normal operations resume. Should medical (immune-suppressed, ill, etc.) or care reasons preclude your child's attendance and you prefer them to continue to learn from home, please contact our school's administration team so that this can be recorded for attendance.
- From Week 3 (Monday 11th May), every student will be attending school 1dpw. This is called Phase 1. Glendore PS will inform you which day of the week your child/children will be assigned to attend classes on-site at school. During this first stage of on-site learning, parents are encouraged to keep their children home, wherever possible, except on their allocated day of onsite learning.
- Initially, about a quarter of the students are expected to be on site at any one time. The School will advise a structure by the beginning of Week 2 that caters for children of essential services workers, the 1dpw contact students and siblings.
- When Phase 1 (Week 3) commences, all students must bring their own lunch, recess and fruit break and stationery.
- Please refer to the attached document for the NSW DoE proposed management of return to school. It has not yet been indicated how long Phase 1 of students attending one day per week will continue before Phase 2 is implemented.
- The Premier hopes to have all children back at school full-time by Term 3, if not before the end of Term 2.

NSW Department of Education

	PHASE 0	PHASE 1	PHASE 2	PHASE 3	PHASE 4
At all times	Schools are open for families who need it.	Students at school at least one day per week.	Students at school at least two days per week.	Students at school five days per week, with social distancing measures.	Students at school five days per week, with full school activities.
Learning from home	Practical resources and guides to support students are available at the department's Learning from home hub .				
You must continue to	<ul style="list-style-type: none"> Keep your child/children at home if possible. Support your child/children to continue learning at home. Communicate with your school via email and phone whenever possible. Follow the health advice and keep your child/children at home if they are unwell. 	<ul style="list-style-type: none"> Follow your school's advice regarding changes to drop off and pick up, including staying in your car when dropping off and picking up your child/children if safe to do so. Maintain social distancing by avoiding gathering outside of school gates. Make sure your child/children have access to lunch and snacks, noting some canteens may not be operating at this stage. Support your child/children to continue learning at home on remote learning days. Communicate with your school via email and phone whenever possible. Follow the health advice and keep your child/children at home if they are unwell. 	<ul style="list-style-type: none"> Follow your school's advice regarding changes to drop off and pick up, including staying in your car when dropping off and picking up your child/children if safe to do so. Maintain social distancing by avoiding gathering outside of school gates. Make sure your child/children have access to lunch and snacks, noting some canteens may not be operating at this stage. Support your child/children to continue learning at home on remote learning days. Communicate with your school via email and phone whenever possible. Follow the health advice and keep your child/children at home if they are unwell. 	<ul style="list-style-type: none"> Follow your school's advice regarding changes to drop off and pick up, including staying in your car when dropping off and picking up your child/children if safe to do so. Maintain social distancing by avoiding gathering outside of school gates. Make sure your child/children have access to lunch and snacks, noting some canteens may not be operating at this stage. Support your child/children to continue learning at home on remote learning days. Communicate with your school via email and phone whenever possible. Follow the health advice and keep your child/children at home if they are unwell. 	<ul style="list-style-type: none"> Follow your school's advice regarding changes to drop off and pick up, including staying in your car when dropping off and picking up your child/children if safe to do so. Maintain social distancing by avoiding gathering outside of school gates. Make sure your child/children have access to lunch and snacks, noting some canteens may not be operating at this stage. Support your child/children to continue learning at home on remote learning days. Communicate with your school via email and phone whenever possible. Follow the health advice and keep your child/children at home if they are unwell.
You can now	<ul style="list-style-type: none"> Families are encouraged to keep their children at home wherever possible, with no student to be turned away. Students who attend school are supervised only, not in their regular classes. No excursions or inter-school activities. Continued enhanced cleaning and hygiene supply arrangements. 	<ul style="list-style-type: none"> Schools have discretion for establishing which group attends on which day, with a preference to group siblings/families together. Families who need to send their child to school every day may continue to do so and no child will be turned away. Classes are split across different spaces and break times can be staggered. No excursions or inter-school activities. Continued enhanced cleaning and hygiene supply arrangements. 	<ul style="list-style-type: none"> Schools have discretion for establishing which group attends on which day, with a preference to group siblings/families together. Families who need to send their child to school every day may continue to do so and no child will be turned away. Classes are split across different spaces and break times can be staggered. No excursions or inter-school activities. Continued enhanced cleaning and hygiene supply arrangements. 	<ul style="list-style-type: none"> Students with increased health risks may continue to learn at home to suit their individual needs. Students remain in the same classroom for the day, break times can be staggered to reduce mixing between class groups. No excursions or inter-school activities. Continued enhanced cleaning and hygiene supply arrangements. 	<ul style="list-style-type: none"> Normal school breaks and entry/exit processes will resume. Infection control procedures will continue on a school by school basis. Communication to staff, students and families regarding NSW Health advice will continue. Continued communication to the Early Childhood Education sector regarding NSW Health Advice.

The NSW Department of Education's '[Managed Return to School for Families](#)' is available at this link or by clicking on the picture in a live doc.

Thank you in advance for your understanding and cooperation of the need for simultaneous education and health prioritisation of all students and staff at Glendore, especially in these unprecedented times.

Mr Khay,
School Principal

